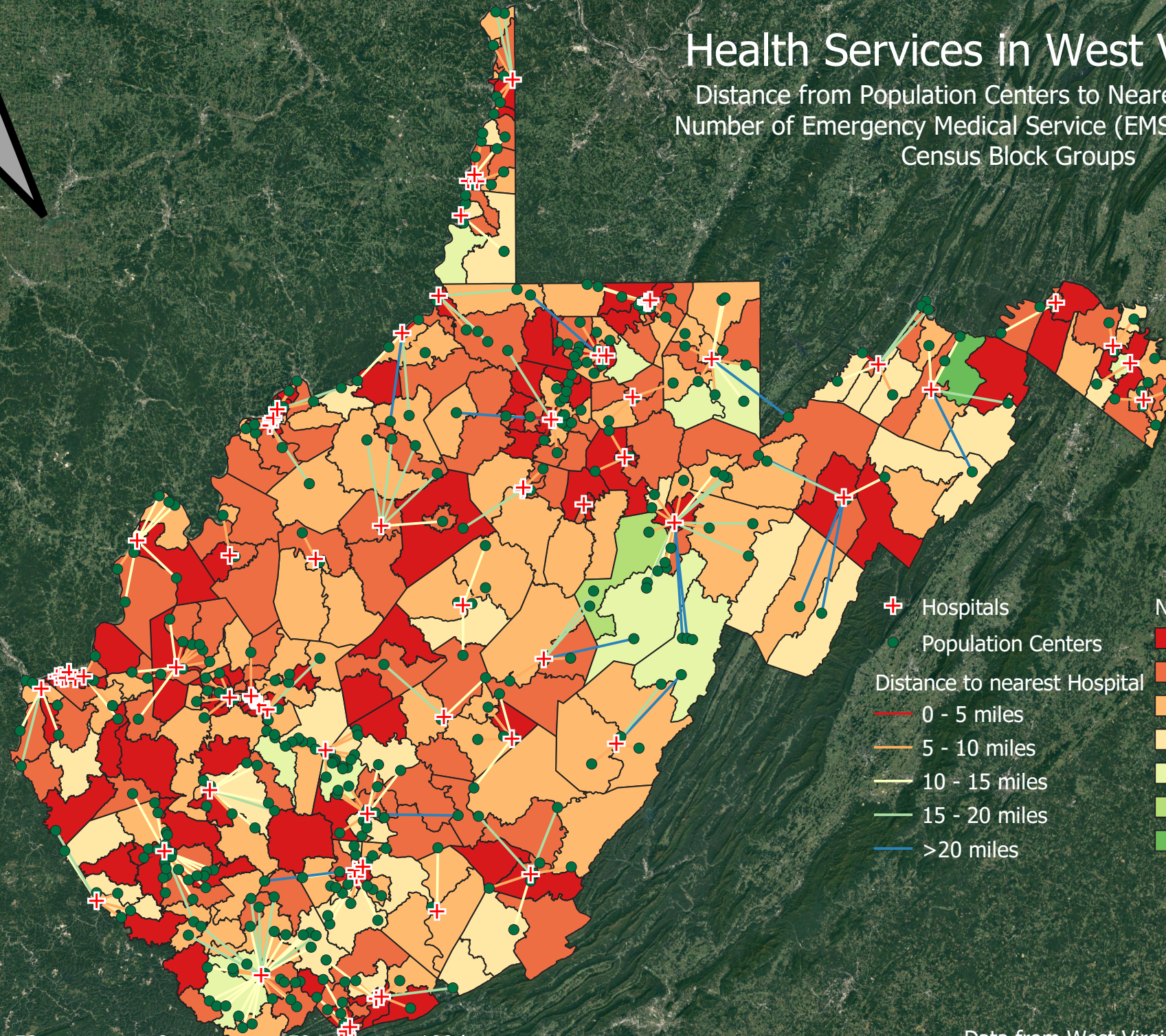
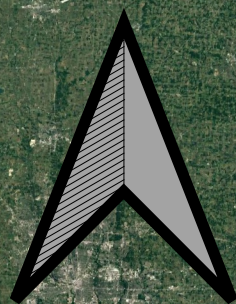


# Health Services in West Virginia

Distance from Population Centers to Nearest Hospital and  
Number of Emergency Medical Service (EMS) locations within  
Census Block Groups



- Hospitals
- Population Centers
- Distance to nearest Hospital
  - 0 - 5 miles
  - 5 - 10 miles
  - 10 - 15 miles
  - 15 - 20 miles
  - >20 miles
- Number of EMS Locations
  - 0
  - 1
  - 2
  - 3
  - 4
  - 5
  - 6

50 0 50 100 km

